



TIDINGS

WESTHAMPTON PRESBYTERIAN CHURCH

JULY / AUGUST 2008

A Note From the Interim Pastor's Study

Dear Members and Friends,

The Second Sunday in June I entered the Parish Hall to lead prayer with the Choir. Dressed in my heavy black robe and a colorful green stole, I faced a choir completely robe-less! I not only looked hot; I began to feel hot. Everyone shouted, "Take it off!" So I did. Once in the pulpit—off came my jacket—I was the only one with a jacket on!



How do we survive for one hour in an **unair**-conditioned church? This question can be crucial to summer survival! Because some may not have a group of caring choir members looking out for you, let me share some advice from *The Presbyterian Handbook*. It's helpful:

Getting trapped in an overheated sanctuary is a common churchgoing experience. The key is to minimize your heat gain and electrolyte loss.

- **Plan ahead.** When possible, scout out the sanctuary ahead of time to locate optimal seating near fans or open windows. Consider where the sun will be during worship service and avoid sitting under direct sunlight. Bring a bottle of water for each person in your group.
- **Maintain your distance from others.** Human beings disperse heat and moisture as a means of cooling themselves. An average-size person puts off about as much heat as a 75-watt lightbulb. The front row will like be empty and available.
- **Remain still.** Fidgeting will only make your heat index rise.
- **During Communion, if wine and grape juice are offered, choose grape juice.** Alcohol is a dehydrator (diuretic), and dehydration is bad. The miniscule amount of alcohol in Communion wine is unlikely to cause dehydration, but err on the side of caution.
- **Dress for survival.** Wear only cool, breathable fabrics.
- **Avoid acolyte or choir robes when possible.** Formal robes are especially uncomfortable in the heat. If you must wear one, make sure to wear lightweight clothes underneath.

(Continued on page 5)

Church Picnic

Our annual Church Picnic was held on a Hot June 8th. Our nicely mowed church field was covered with tables, chairs, grills, a couple of shade awnings, iced tubs of cold drinks, hot dogs, hamburgers, watermelon and dozens of covered dishes and desserts.

Best of all, our field was blessed with happy faces. Some conversed at tables or found shade next to the trees. Some were busy at the grills or serving others. One corner of the field hosted a kick-ball game for our young adults who forgot how hot it was! The youngest enjoyed "chilling out," splashing in water games with each other.

The Church Life Committee thanks all of you who were part of that special day. Thank you for cutting the grass, for sorting through the supplies, for providing record keeping of past picnics, for moving tables and chairs and grills, for grilling the meat, for bringing food, for setting up the food tables, for helping to keep the food hot or cold, for shopping, for leading the children, for setting up the sound system, and for taking pictures to record another special event in our church history. A round of applause goes to the clean-up crew outside and in the kitchen. Most of all, thanks to all of you for answering the invitation to join in Christian fellowship as we celebrate the coming summer season. You made it a great picnic!

Bob Hoyt,
Picnic Chair

Congratulations to the Graduates!

WESTHAMPTON BEACH HIGH SCHOOL

Kristina Carter will be attending Clarion University in PA, majoring in Speech Pathology.

Zachary Cento

Jessica Daniels

Kyle L. Hubbard will be attending Villanova University in PA to study business.

Sean Jones plans to attend Elon University in NC to study business, communications & music.

Colleen McKennett will attend Stonehill College in MA to study history.

Cara Oslager will attend George Washington University.

Jonathan Pacholk

Jim Sobeck will attend Suffolk Community College.

Sara Sweeney

EASTPORT SOUTH MANOR HIGH SCHOOL

Cynthia Diers will attend SUNY Maratime College. She got her pilots certification on June 17th and will join a regimen

in the fall.

Karen Diers received a full scholarship to the Honors Program at Suffolk Community College. She intends to pursue a career in Occupational Therapy.

Victoria Fochtman will attend Suffolk Community College to study psychology.

RIVERHEAD HIGH SCHOOL

Natalie Fox

HAMPTON BAYS HIGH SCHOOL

Doug Oakland plans to attend Suffolk Community College in the fall.

OTHER HIGH SCHOOL GRADUATES

Melissa O'Laughlin

Matthew Ravehnall

COLLEGE GRADUATES

Kevin Pearson graduated with a Masters Degree in Administration and Leadership Skills from Plattsburgh State University in May. Kevin has been a teaching assistant in the Center for Diversity, Pluralism and Inclusion at Plattsburgh and will continue that work as a staff member beginning in June.

(Continued on page 9)

A Meditation

**Living spirit, of whom we are,
Who kindles every beating star
That, unseen, still will burn,
Teach us to unlearn
The dogged self promoting fight.
Let that self let in more light.
Walk us through dimness as we mend
Till it's love we comprehend.**

—Kay Kidde

Westhampton Beach
Nursery School
. . . located here in the
church is now accepting
applications for the 2008-
2009 year. The
cooperative school has
classes for 3 and 4 year
old children. For more
information please

contact
Dara Penn at
288-6330.



Presbyterian Women

The winter-spring monthly meetings ended with our traditional Strawberry Shortcake Dessert luncheon. Our next gathering will be at noon, Sept. 10th, for a covered dish luncheon. It's not too early to mark your calendar.

July 19th we will present the 3rd Summer Treasure Sale. Please bring your donations for the Twice-Nice, Jewelry and Hand Crafted items to the church, mornings between 9:00 am and noon beginning Monday, July 14th. Homemade baked goods, jams and jellies will be welcome Friday, the 18th before 4:00 pm or before 10:00 am the day of the Treasure Sale.

The "Help-Wanted" sign is out for the Fall Rummage Sale. The chairperson/persons will select the sale days. Hopefully you will step forward soon. It is necessary to reserve a place on the church calendar as soon as possible.



Colorful Display

Linger for a few minutes at the front gardens and enjoy the glorious display of colorful annuals and perennials. Thanks go to Marcella Weiss for the generous donation of the annuals.

Five pounds of card fronts were sent to Concord, CA in reply to a request from a volunteer with a church group there. A letter of appreciation is on our bulletin board telling us what they create with recyclables.

Thank you Sarajane Giere for introducing the Adopted-Children of PW to the congregation. If you have not seen the 3 panel display (how could you miss it?) please look and read about the children and their families.

Elizabeth Circle will meet September 22, 2009, at 7:00 pm at Marilyn Wood's home. We will study the Book of Luke. Bible Study books will be available soon.

The summer months find us in many places doing many things. Let's keep our church family a part of our plans for this beautiful time of year.

Dress for Success

Share your success! Donate your gently used suits, separates, shoes, handbags and accessories and change the life of a low-income Suffolk County woman in need of professional attire for employment. "Dress for Success" will be at Suffolk Community College's Culinary Arts and Hospitality Center, 20 East Main Street, Riverhead on Wednesday, July 9th from 11 am until 2 pm. Come learn more about their suiting program, their innovative employment retention program and their Professional Women's Groups. The first 50 donors will receive free coupon books from Tanger Outlet Center.

For more information about Dress for Success Brookhaven, contact the boutique at 631-451-9127 or visit their website at www.dressforsuccess.org/brookhaven.



Save the Date!

Saturday, July 19th

Presbyterian

Women's

Summer

Treasure

Sale

10am - 2pm

Food

Bake Sale

Handiwork

Jewelry

"Twice Nice"

Don't miss it!

USHERS FOR JULY

Deacon Kyle Miller 942-7979

	SANCTUARY	CHAPEL
July 6	Kathy Dayton Tim Dayton	Jean Seyfert Kyle Miller
July 13	Pat Shima Sarajane Giere	Jean Seyfert Nancy Miller
July 20	Eloise Carter Nancy Miller	Stu Wood Marilyn Wood
July 27	<i>Not yet filled</i>	<i>Not yet filled</i>

Youth Ministry News

A Message from your Youth Ministry Coordinator.....

As many of you know, my husband, Gordon has been serving as the Science and Technology Chairperson in the Peekskill City School District since the 2006-2007 school year. In recognition of his contributions to the district, he was awarded tenure this month. Knowing that this change was now going to be permanent, I began to search for a position in the area. I have accepted the position of 4-H Youth Development Program Director at Cornell Cooperative Extension of Rockland County effective August 1, 2008.

I have notified Pastor Peter, the Session and Personnel Committee that I will continue on as the Youth Ministry Coordinator through January 31, 2009. The time between now and my resignation can serve as a time of transition and can be used to recruit and train the new leadership for the Youth Ministry Program at our church. We met with many of our middle and high school youth on Sunday, June 10th to share the news of my move and to talk about how that was going to impact the Youth Ministry program. I really appreciated the fact that Meg Baird and Lisa Finn were there to provide support for our youth and to reassure them that they are committed to the program and will be there throughout the transition and beyond. I apologize for the fact that some of our teens will learn this about this change by reading this article. I think it is important for us to continue to talk about how we feel about this

change and to plan for the future of this program.

This congregation has been my church family for thirty years this year. I began working in the Youth Ministry Program in 1995. I have countless memories of retreats, confirmation classes, Youth Sundays, REACH Workcamps, local mission projects, church school classes and just "hanging out" in Bailey Hall. I have been truly blessed to serve my Lord all these years here and although leaving is very difficult, I look forward to what the Lord has in store for me in my new community. So, let's try not to be sad. Let's celebrate all we have accomplished together during these years and plan to ensure that the Youth Ministry program at our church continues to be a faith building experience it has been all these years for all of our middle and high school youth.

REACH Workcamp – July 11-20, 2008

Fourteen youth and three adults will be leaving for the REACH Workcamp in Oceana, West Virginia on Friday, July 11th at 6am. Special thanks to Kyle Miller for "stepping up to the plate" and volunteering to be our third chaperone! Come and pray with us that morning! We are looking for members of the congregation who would be willing to be Prayer Partners by joining us on the spiritual journey to Oceana. Envelopes will be hanging in the Parish Hall that have the name of one of our workcampers and the address of the school where we will be staying. Prayer Partners

are asked to pray for the work-camper each day. Some Prayer Partners have sent much appreciated cards or care packages. REACH Workcamps asks each congregation that is sending a delegation of youth to pray for the mission of the workcamp on a particular day. Please pray for all of the workcampers, REACH staff and residents on Tuesday, July 15th. This year's participating youth include: CJ Andrews, Joanna DeLeon, Hector Perez, Gregory Campos, Billy Finn, Cory Hubbard, Mara Terchunian, Julia and Alec Christ, Kayley O'Brien, Megan Yuen, Brett Tucker, Robert Tureski, Chloe Rouhandeh, Adult Chaperones include Pat and Gordon Hubbard and Kyle Miller.

Two additional summer mission and fellowship opportunities:

We will be going to the Montauk Presbyterian Youth Group Coffee House. Help the Montauk Presbyterian Church Youth Group raise money for Heifer International. They are hosting a coffee house that will feature "Feed the Need" on Wednesday, July 23, 2008 from 7pm-10pm. We will leave the church at 3pm, spend some time on the beach, shower and go to the coffee house. Cost: \$15.00 includes transportation, picnic dinner and coffee house admission. Sign-up today on the Youth Ministry bulletin board in the Parish Hall.

As our teens requested: Middle school and high school youth are invited to go to Splish Splash on Saturday, August 16,

Reports from the Finance Ministry

How are we doing in 2008???

The Session and the Board of Trustees receive monthly reports of income and disbursements to study. Accompanying these reports, which show the actual dollars received or spent, is a monthly chart showing the comparisons in a visual graph. This graph answers the above question. And the answer today is, "Not good at all."

Take a look at the graph entitled **WPC 2008 Income & Expenses, May 2008 Summary**. The upper grouping of lines is the visual representation of the total budget. The solid, straight line is a projection of the total amount of the budget spread evenly across the twelve months of the year. If you are wondering whether this line is for the expenses or for the income, the answer is for both.

The two lines with monthly dots are the actual receipts and the actual disbursements to date. The original graphs are presented in color, but you can determine which line is which by reading the note in the box at the top: "Income \$11,156 below expenses." Obviously the income line is the lower line on the graph.

The boxed notation also says "Income \$24,087 below a balanced budget." This can be seen visually too. The income line is eleven thousand below the expenses, and the expenses are that much and more lower than the projected budget (the solid line). The income is twenty-four thou-

sand dollars too low to meet the budget.

It is easy to look at this and think about how much money we are saving, that our expenses are obviously less than we budgeted. This is not true! The disbursements to date are lower than what was budgeted. The expenses are not lower. The fact of the matter is that we owe money badly. We have not been able to pay our general mission giving to the larger church for three months. We are also in arrears in paying our per capita assessments. These two payments are vital to the work of the larger church. Our inability to pay in a timely fashion is hampering the work of the church around the island, across the country, even around the world. What hurts even more is the fact that our Mission Ministry is unable to use its budgeted funds without first checking with our financial officers to see if the cash is really there to be used. Right now, the cash simply is not there.

The final note you will see in the top box is "Pledges \$6,821 below goal." This statement refers to the lower pair of lines. The straight grey line is the projected pledge line in the budget. The dotted line is the actual pledges (offerings) received to date. Our giving in worship is nearly seven thousand dollars less than we promised (pledged) it would be by this time of the year. And, our total pledges were insufficient to meet the needs of the budget. This makes the current deficit even worse.

The Finance Ministry met a couple of weeks ago and after considering the situation described above, they agreed with the Treasurer that we need to take the 3rd and 4th quarters' portions of the budgeted endow-

(Continued on page 6)

Pastor's Page con't.

(Continued from page 1)

- **Pray.** Jesus survived on prayer in the desert for 40 days. Lifting and extending your arms in an open prayer position may help cool your body by dispersing excess heat. If you've been perspiring, though, avoid exposing others to your personal odor.

Be aware. Carry a personal fan—or use your bulletin as a substitute. Worship services scheduled for one hour sometimes will run long. Plan ahead.

As always, in our shared Interim Ministry, please do not be hesitant or consider it unimportant to involve me in your concerns. This is the time to reflect, and deal with, issues of grief and endings, trust, congregational identity, and expectations for the future. I am in the office Mondays and Wednesdays from 9:00 am-12:00 noon. Drop by or arrange with Nancy a more convenient time: 288-2576; my email: pastor@westhamptonpresbyterian.org .

Faithfully yours in peace,
Peter Sulyok
Interim Pastor

Finance Ministry con't.*(Continued from page 5)*

ment funds support now. This is necessary to try to catch up with the past due commitments to the church and to keep meeting our payroll and other expenses. This is the end of the capital transfers in the budget. We have already used all the prepaid pledges; we have already transferred the pledge amount from the staff support fund.

Can you help? Remember Pastor Peter's parable from last month's Tidings. Please keep your pledge payments up to date, and give some prayer and thought to how we can improve matters. Do you have any ideas for a fundraiser? Speak to Karen Derryberry. Do you have any ideas about stewardship? Speak to Margretta Anderson. Do you have any ideas to help the Finance Ministry? Speak to Diane Perry. These chairpersons of these committees will welcome your thoughts.

How have we been doing 2003--2008???

Thanks to our Financial Secretary, Bob Lohnneiss, the Finance Ministry, Session, and Board of Trustees have recently had in hand a five-year overview of our church's budgets. It is easy to look at monthly reports, or to focus on the current figures when planning the coming year's budget, and lose the view of the larger picture. This five-year study should help the church see where it has been and where it is headed financially. *Are we putting our money where we want to?*

There are four statistics represented on the graph entitled **WPC Five Year Budget Analysis**. The income line (broken) and the expense line (solid) run neck and neck across the top of the graph until they hit the year 2006. Then the income takes a nose dive down, hitting the lowest point in 2007. The income line rises in 2008 only because the 2008 budget projects this rise. The reality as described in the other article in this Tidings shows that if things continue as they are, this rise will not be realized. The income line on this graph as of 12/31/2008 will most likely be practically horizontal from 2007 to 2008.

About halfway down on the graph is the line representing the staff salaries. This line shows a dip in 2004, partially recovered in 2005, when we were experiencing some changes in the secretarial and custodial staff. Overall there is little change from 2003 to 2008. In fact, the actual increase is only 2.48%. This is because basically we give only a modest cost of living increase to our staff each year. It has been some time since we were able to give merit raises.

The bottom line shows our mission giving. This is composed of budgeted funds given to local and worldwide missions as determined by our church's Mission Ministry, budgeted funds used by the Youth Ministry for their annual Reach mission trip, our church's support of the East End Presbyterian Parish, and our General Mission giving to the larger church – the Presbytery of Long Island, Synod of the North-

east, and General Assembly. This line is disturbingly static. The growth from 2003 to 2008 is only 0.45%; that is less than one percent. It is not that many years ago that we were trying to increase our mission giving every year, and we were challenged to increase it by at least one percent of the total budget each year. With that goal in mind, the mission dollars in 2008 should be more than 5% higher than those in 2003.

Not depicted on the enclosed graph are the costs of our Programs (Christian education, chil-

*(Continued on page 9)***Youth Ministry News con't.***(Continued from page 4)*

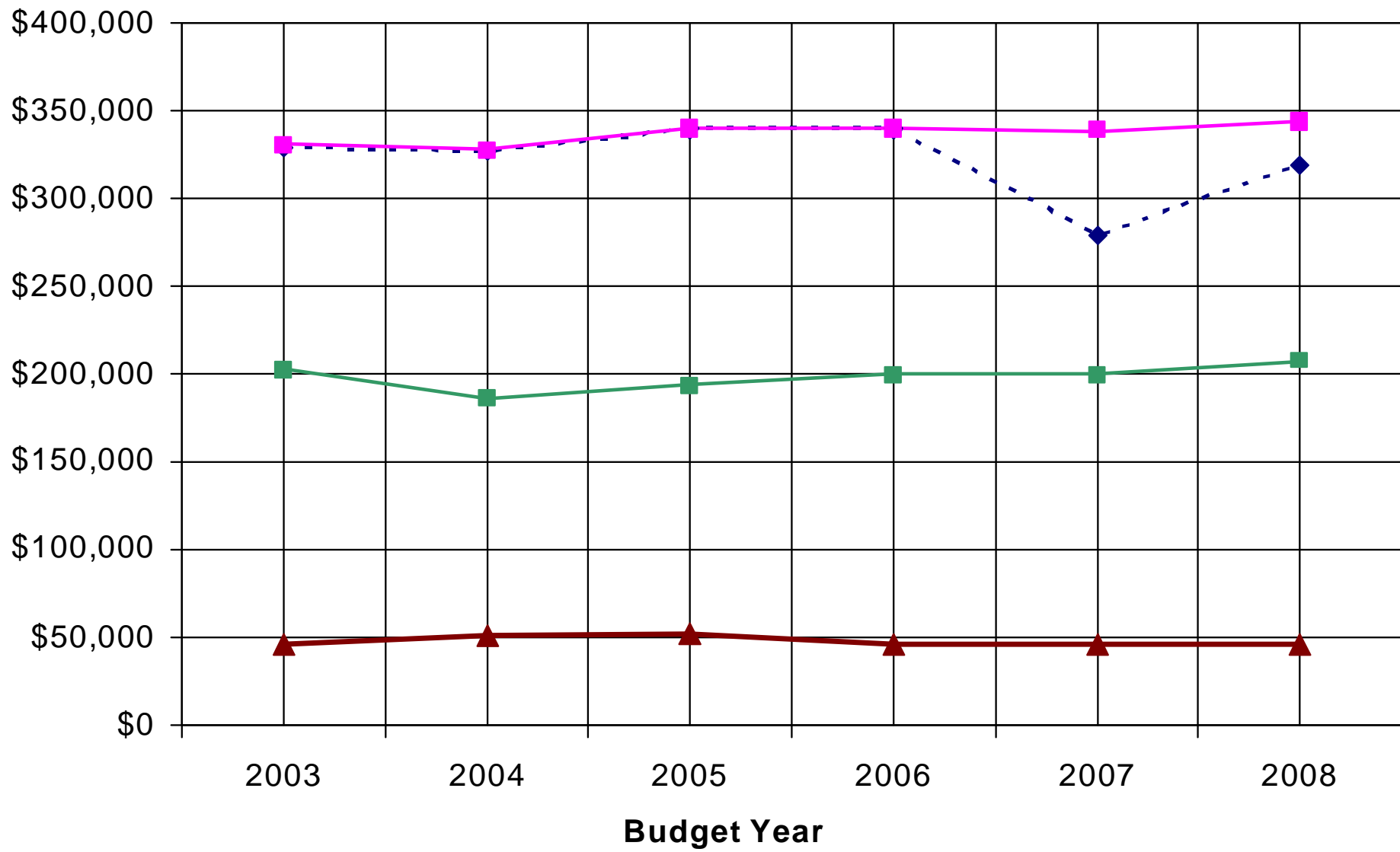
2008. Meet at the church at 8:30am. Bring \$30.00 for admission and lunch. We will return to the church at 6:30pm. Sign up today on the Youth Ministry bulletin board in the Parish Hall.

Mark your calendars now! The Family Nite Potluck Supper that "kicks-off" the fall and winter Youth Ministry program will take place on Sunday, September 14th at 6pm in Bailey Hall. We will welcome the new sixth graders and their families and following dinner we will share the fall and winter Youth Ministry schedule of activities. Bring a main dish, salad or vegetable to share. The Youth Ministry Committee will provide beverages, bread and butter, and dessert.

Please call Pat or Gordon Hubbard with any questions about the Youth Ministry program at 631-553-6031.

WPC Five Year Budget Analysis

-◆- Income -■- Expenses -▲- Mission Giving -■- Salaries & Benefits



Happy Birthday and Anniversary to:

JULY

1 Marilyn and Stu Wood
 2 Hayley Bester
 2 Sue and Bill Buhl
 3 Grace Haddad
 3 Brian Fochtman
 4 Kyle Miller
 5 Gale Spaulding
 6 Harold Williams
 7 Gil Frevert
 7 Jean Tuthill
 8 Lisa Finn
 8 Gavin Bailey
 9 Frank Jessup
 10 Chase Golding
 10 Bob Barravechia
 11 Steve Collins
 11 Cheryl Van Tuyle
 11 Grant Frevert
 12 Bob Kavan
 14 Suzanne and Frank Jessup
 15 Marion Rupprecht
 16 Kathy Tilley
 16 Linda Howard
 17 Stephanie Oakland
 17 Peter Horton
 18 Sue Buhl
 19 Korey Williams
 19 Tim Shea
 20 Betty Failing
 22 Helen Fitzsimmons
 23 Heather Lohneiss
 23 Jeannean Jessup Levitt
 24 Jackie Moore
 24 Lauren Babis
 27 Pat Speed
 27 Peggy and Denis Yuen
 28 Jean and Beecher Halsey
 29 Kelsey O'Brien
 29 Scott Frevert
 29 Kathy and Bob Johnson
 29 Mary Nagle
 31 Mary and John Hoch
 31 Deborah Busking
 31 Morgan Schwinn

AUGUST

1 Kathy and Warren Frevert
 2 Jeannean Jessup and Dan Levitt
 4 Tom Rogers
 5 Peggy Childs
 5 Gini Wagner
 6 Chelsey Carter
 6 Wes Winters
 7 Natalie Fox
 10 Warren Frevert
 11 Mark Frenzel-Sulyok
 11 Luke Bester
 12 Jenny and Jason Ketner
 13 Glorya Johnson
 13 Susan Rogers
 14 David Baird
 15 Owen Williams
 16 Judy and John Sprague
 16 Brendan Speer
 17 Charles Golding
 18 Parker McAnelly
 18 Randy Dayton
 19 Ed Shea
 20 Timmy Dayton
 21 Betsy and Bob Fox
 23 Dottie Dudley
 23 Rico Johnson, Jr.
 23 Christine Ehlers
 23 Sandy and Ed Surgan
 24 Gavin Keblish
 26 Elise Barravechia
 27 Doris Thilberg
 27 Caroline Oakland
 28 Judy and Dave LeBleu
 29 Kathy Walker
 30 Kay Kidde
 30 Mara Terchunian
 31 Dick Anderson
 31 Annette Petersen
 31 Gail Klepper
 31 Carey Speer
 31 Pat and Dick Lutz
 31 Jane and Tom Otis
 31 Jim Czachur

Finance Ministry con't.

(Continued from page 6)

dren, youth, and adult ministries, music and worship, church family activities, and office expenses) and the Other Expenses (building maintenance, utilities, ground maintenance, insurance, and manse maintenance).

While the total budget has only grown 4.12% over the past five years, the funds spent on programs of the church have decreased 15.36%. At the same time, the other expenses have grown a full 30.77%. *Are we putting our money where we want to?*

As the boards prepare the budget for 2009, and as the church prepares its mission study assessing where we are and where we want to go, this five-year analysis will hopefully open our eyes to where we have been, where we are now, and where we are headed. The Bible tells us that where our treasure is, there shall our hearts be also.

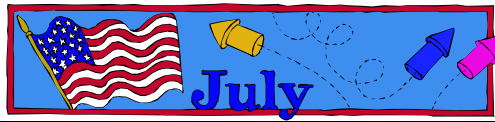
Graduates con't.

(Continued from page 2)

In addition, a front page article in the Press-Republican on May 12, 2008 recognized Kevin for his commitment to expanding the college level programs he facilitates to two upstate school districts.

Brendan Yuen graduated with a Bachelor of Science in Finance from the University of Florida. He is presently living in Orlando and is employed by Raytheon.

Thank you to all those who responded to the requests in Tidings and the bulletins and submitted their information regarding their graduations.



Sun	Mon	Tue	Wed	Thu	Fri	Sat
		1	2	3	4 <i>INDEPENDENCE DAY Office Closed</i>	5
6 <i>Communion Commissioning Sunday for REACH? Summer Church School Begins?</i>	7	8 <i>7pm REACH Planning Ses- sion</i>	9 <i>7-8:30pm Backyard Bible Study</i>	10	11 <i>Youth leave for REACH</i>	12
13 <i>Church Life Meeting</i>	14	15	16 <i>7-8:30pm Backyard Bible Study</i>	17 <i>10am EEPP (Amagansett)</i>	18	19 <i>10am-2pm PW Treasure Sale</i>
20 <i>Youth return from REACH 10am Bagel Breakfast</i> 	21	22 <i>Lobster Night at Meschutt Beach?</i>	23 <i>3pm Youth trip to Montauk: Feed the Need 7-8:30pm Backyard Bible Study</i>	24	25	26 <i>1pm Memorial service for Vir- ginia Thomp- son</i>
27	28	29	30 <i>7-8:30pm Backyard Bible Study</i>	31		



Sun	Mon	Tue	Wed	Thu	Fri	Sat
					1	2 <i>4pm Quiogue Association</i>
3 <i>Communion 8:30am Spiritual Conversations</i>	4	5 <i>7pm Deacons</i>	6 <i>7-8:30pm Backyard Bible Study</i>	7	8	9
10	11	12 <i>7pm Session</i>	13 <i>7-8:30pm Backyard Bible Study</i>	14	15 <i>Tidings Deadline</i>	16 <i>8:30am Youth trip to Splish Splash</i>
17 <i>10am Bagel Breakfast</i> 	18 <i>VBS all week</i>	19 <i>7pm Trustees</i>	20	21	22	23
24	25	26	27	28	29	30
31 <i>Meeting of the Congregation & Corporation to elect Youth Officers?</i>						

WESTHAMPTON PRESBYTERIAN CHURCH
90 MEETING HOUSE ROAD
WESTHAMPTON BEACH, NY 11978

BULK RATE
NON-PROFIT ORGANIZATION
US POSTAGE PAID PERMIT #98
WESTHAMPTON BEACH, NY 11978

Phone: 631-288-2576

Fax: 631-288-6011

email:

admin@westhamptonpresbyterian.org

We're on the web:

www.westhamptonpresbyterian.org

Your issue of July August Tidings

AN ART EXHIBITION

"A WORLD AT PRAYERS"



WATERCOLORS
BY CREIGHTON BERRY

Friday, August 22

to

Saturday September 12, 2008

at the

Remsenburg Academy

130 South Country Road, Remsenburg, NY